

# Waste Not, Want Not

by Bonnie Hunter Quiltmaker

One easy block with lots of setting options.



67" x 83"

This easy scrap quilt could become one of your favorites. The lap quilt shown here is made using 48 blocks set 6 blocks across by 8 blocks down. You can easily increase the size of your quilt by simply making more blocks.

# Fabric

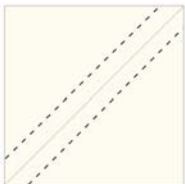
Since this is a scrap quilt, no exact yardage is given for the blocks. It is recommended that you use as many light and dark prints as possible. A true scrap quilt pays no attention to pattern or color; this is a great chance to use some of your “ugly” fabrics—the more variations in fabrics, the more “sparkle” in the quilt. You might want to gather fabrics for a “selective scrap” quilt by using only two color families like the blue and yellow one shown here. Even with a “selected scrap” quilt, the yellow fabrics all tend to be on the lighter side, while the variety of blue fabrics has a darker value. Almost anything works. Just remember to have a good contrast between your lights and darks.

Use pre-washed 100% cotton fabrics. A  $\frac{1}{4}$ " seam allowance is including in all cutting directions. Yardage for borders and binding is listed on page 3.



## Block Construction

For each block, CUT: (1)  $4 \frac{7}{8}$ " light square  
 (1)  $4 \frac{7}{8}$ " dark square  
 (4)  $2 \frac{1}{2}$ " light squares  
 (4)  $2 \frac{1}{2}$ " dark squares



Use the “Un-Biased Solution” to make half square triangle blocks. For each block, layer one  $4 \frac{7}{8}$ " light and one  $4 \frac{7}{8}$ " dark square, right sides together. Draw a diagonal pencil line and stitch  $\frac{1}{4}$ " away from this line as illustrated here. Cut on solid line and press seam toward darker fabric; this makes 2 half-square triangle units. Each should each measure  $4 \frac{1}{2}$ " square.



Using a  $\frac{1}{4}$ " seam allowance, sew two four-patch blocks using (2) different light  $2 \frac{1}{2}$ " squares and (2) different dark  $2 \frac{1}{2}$ " squares for each 4-patch unit. For easy matching, press seams in alternating directions. Completed 4-patch blocks should each measure  $4 \frac{1}{2}$ " square.

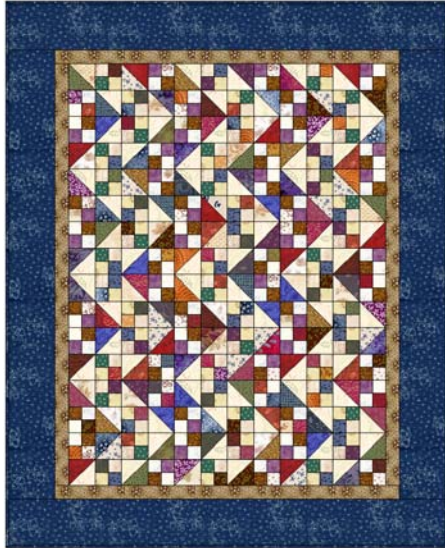
To assemble each block, you will need two half-square triangles (made from 2 different light and dark fabrics) and two 4-patch blocks (again, made from different light and dark fabrics) to maintain the scrappy look. Construct blocks by following the illustration at right (watch the orientation of the dark and light triangles and squares). Try not to use the same fabrics in any one block.

Each completed block will measure  $8 \frac{1}{2}$ " (unfinished). Make 48 blocks in the same manner.

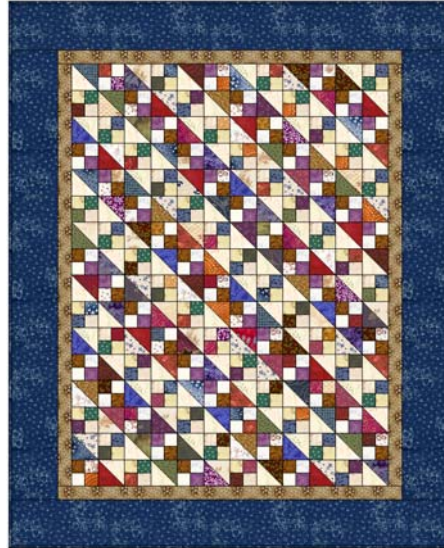


## Assembling the Quilt

Finish your quilt by arranging the blocks 6 blocks across by 8 blocks down. There are lots of options for arranging blocks in addition to the "Pinwheel" set featured on page one. A few others are pictured below:



Streak of Lightning



Diagonal



Dark with Light

## Borders and Finishing

### BORDERS AND BINDING

Border #1	$\frac{3}{4}$ yard	Cut (7) 2 $\frac{1}{2}$ " x width of fabric strips
Border #2	1 $\frac{3}{4}$ yards	Cut (7) 7" x width of fabric strips
Binding	$\frac{3}{4}$ yard	Cut (8) 2 $\frac{1}{2}$ " x width of fabric strips

Quilt as desired and bind using strips listed above to make French-fold binding.



Creative Commons Copyright License 2007 Bonnie Hunter

Bonnie Hunter Quiltmaker patterns are released under a Creative Commons license. They're yours. Copy them as much as you want, pass 'em around. All I ask is that you don't alter or sell them and please leave my name on them.

